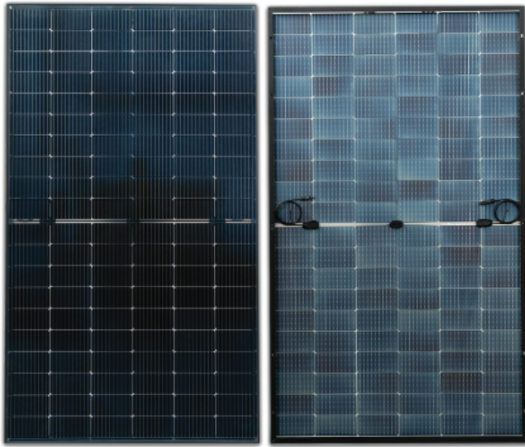


PiK 480-500M(120)

10 BB HALF-CELL N-Type TOPCon Bifacial
Transparent Backsheet Monocrystalline PV module



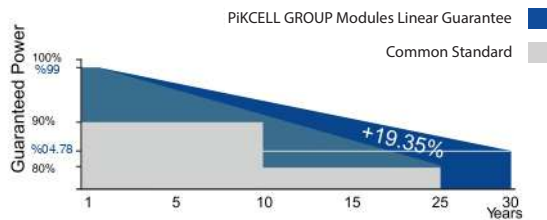
480-500W
POWER RANGE

22.47%
MAXIMUM EFFICIENCY

0.40%
YEARLY DEGRADATION

10 10 YEARS PRODUCT WARRANTY

25 25 YEARS OUTPUT GUARANTEE



IEC 61215/IEC 61730

ISO 14001: Environmental Management System

ISO 9001: Quality Management System

ISO45001: Occupational Health and Safety Management System

*Please check the valid version of Limited Product Warranty which is officially released by PiKCELL GROUP

*As there are different certification requirements in different markets. Please contact your local sales representative for the specific certificates applicable to the products in the region which the products are to be used.

Key Features



Excellent Cells

SMBB technology reduce the distance between busbars and finger grid line which is benefit to power increase.



Better Weak Illumination

More power output in weak light condition, such as haze, cloudy and early morning.



Anti PID

Ensured PID resistance through the quality control of cell manufacturing process and raw materials.



Adapt to Harsh Outdoor Environment

Resistant to harsh environments such as salt, ammonia, sand, high temperature and high humidity environment.



Reaction to Fire

In conformity with standard UNI 9177:1987, reaction to fire class 1.



Excellent Quality Management

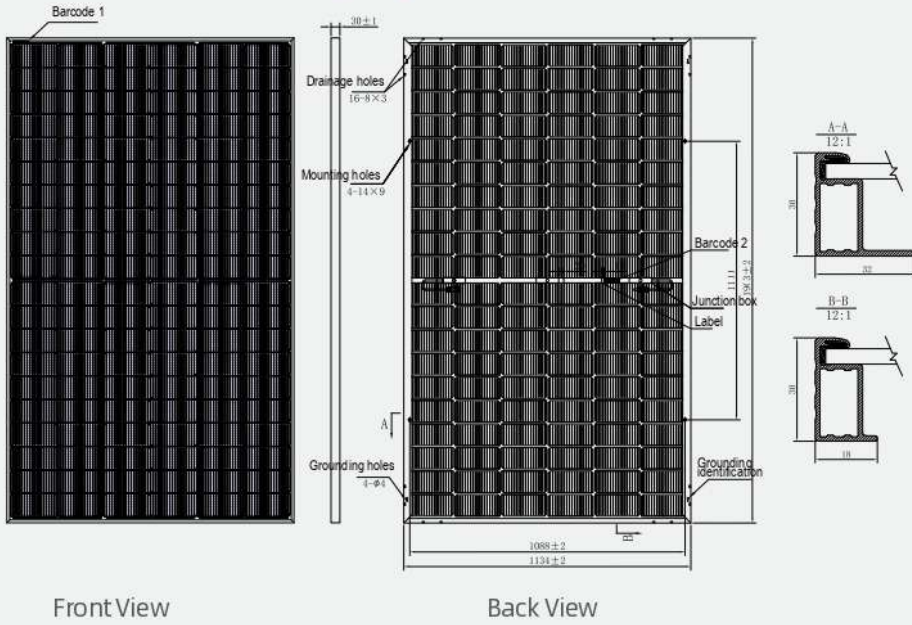
Warranted reliability and stringent quality assurances well beyond certified requirements.



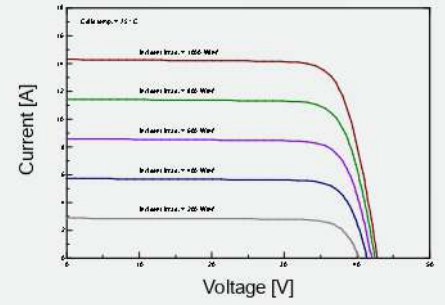
Bifacial Technology

Up to 25% additional power from back side depending on albedo.

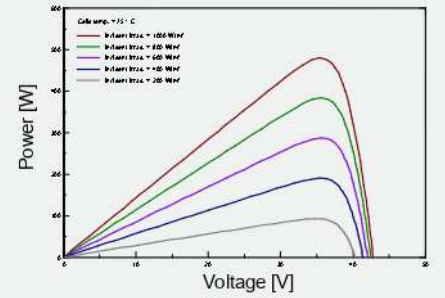
DIMENSIONS OF PV MODULE(mm)



I-V CURVES OF PV MODULE(480W)



P-V CURVES OF PV MODULE(480W)



*Remark: customized frame color and cable length available upon request

ELECTRICAL CHARACTERISTICS | STC*

Nominal Power Watt Pmax(W)*	480	485	490	495	500
Maximum Power Voltage Vmp(V)	35.50	35.70	36.10	36.30	36.50
Maximum Power Current Imp(A)	13.52	13.59	13.57	13.64	13.70
Open Circuit Voltage Voc(V)	42.80	43.00	43.20	43.40	43.60
Short Circuit Current Isc(A)	14.31	14.38	14.45	14.52	14.59
Module Efficiency (%)	22.24	22.47	22.70	22.93	23.16

*The data above is for reference only and the actual data is in accordance with the practical testing.
*STC (Standard Test Condition): Irradiance 1000W/m², Module Temperature 25±2°C, AM 1.5
*Measuring uncertainty: ±3%, all the electrical characteristics such as Power, Im, Vm and FF are within ±3% tolerance.

MECHANICAL DATA

Solar cells	N-type Monocrystalline
Cells orientation	120 (6x20)
Module dimension	1909x1134x30mm(With Frame)
Weight	23.5 kg
Glass	3.2mm, High Transmission, AR Coated Heated Strengthened Glass
Junction Box	IP 68, 3 diodes
Cables	4 mm ² , 350 mm
Connectors*	MC4-compatible

*Please refer to regional datasheet for specified connector

ELECTRICAL CHARACTERISTICS | NMOT*

Maximum Power Pmax(Wp)	351.70	355.50	359.00	362.90	366.30
Maximum Power Voltage Vmp(V)	32.80	33.00	33.20	33.40	33.60
Maximum Power Current Imp(A)	10.71	10.76	10.82	10.87	10.92
Open Circuit Voltage Voc(V)	39.80	40.00	40.20	40.40	40.60
Short Circuit Current Isc(A)	11.38	11.44	11.49	11.55	11.60

*NMOT: Irradiance 800W/m², Ambient Temperature 20°C, AM 1.5 Wind Speed 1m/s

TEMPERATURE RATINGS

NMOT	44°C ±2°C	Maximum system voltage	1500 V DC
Temperature coefficient of Pmax	(-0.30 ±0.03)%/°C	Operating temperature	-40°C ~ +85°C
Temperature coefficient of Voc	-0.25 %/°C	Maximum series fuse	30 A
Temperature coefficient of Isc	0.046 %/°C	Front Side Maximum Static Loading	Up to 5400 Pa
Refer. Bifacial Factor	(80 ±10)%	Rear Side Maximum Static Loading	Up to 2400 Pa

*Remark: Do not connect Fuse in Combiner Box with two or more strings in parallel connection

WORKING CONDITIONS

ELECTRICAL CHARACTERISTICS WITH 25% REAR SIDE POWER GAIN* PACKING CONFIGURATION*

Front Power Pmax/W	475	480	485	490	495	500
Total Power Pmax/W	594	600	606	612	618	624
Vmp/V (Total)	35.40	35.60	35.80	36.00	36.20	36.40
Imp/A (Total)	16.77	16.85	16.93	17.00	17.07	17.14
Voc/V (Total)	41.70	42.90	43.10	43.30	43.50	43.70
Isc/A (Total)	17.74	17.83	17.92	18.01	18.10	18.19

Piece/Box	36
Piece/Container (40'HQ)	864

*Customized packaging available upon request.
*Remark: Electrical data in this catalog do not refer to a single module and they are not part of the offer. They only serve for comparison among different module types.
*Caution: Please be kindly advised that PV modules should be handled and installed by qualified people who have professional skills and please carefully read the safety and installation instructions before using our PV modules.

*Bifacial Gain: The additional gain from the backside compared to the power of the front side at the standard test condition. It depends on the mounting(structure,height,tilt,angle,etc.) and albedo of the ground.