

Constant Current Driver

Model: CCXXWXXX-XXXCG2
CCXXWXXX-XXXCG2-1



Model	Output Current	Input Current	Input Power	Output Power Range	PF	Efficiency	Output Voltage	No load Voltage
CC21W150-500CG2 CC21W150-500CG2-1	150mA	0.05A	8W	3-6.3W	0.70	76%	20-42V	55V
	200mA	0.06A	11W	4-8.4W	0.80	79%		
	250mA	0.07A	14W	5-10.5W	0.85	81%		
	300mA	0.09A	16W	6-12.6W		82%		
	350mA	0.1A	18W	7-14.7W	0.90	83%		
	400mA	0.12A	21W	8-16.8W		84%		
	450mA	0.13A	23W	9-18.9W	0.92	85%		
	500mA	0.14A	25W	10-21W		85%		
CC30W350-700CG2 CC30W350-700CG2-1	350mA	0.1A	17.5W	8.7-14.7W	0.85	85%	25-42V	55V
	400mA	0.12A	20W	10-16.8W		86%		
	450mA	0.13A	22.5W	11.2-18.9W	0.90	87%		
	500mA	0.14A	24.5W	12.5-21W				
	550mA	0.16A	27W	13.7-23.1W	0.92	88%		
	600mA	0.17A	29.5W	15-25.2W				
	650mA	0.18A	32W	16.3-27.3W	0.95			
	700mA	0.20A	34W	17.5-29.4W				
CC42W700-1050CG2 CC42W700-1050CG2-1	700mA	0.20A	34W	17.5-28W	0.92	88%	25-40V	55V
	750mA	0.21A	35.5W	19-30W				
	800mA	0.22A	37W	20-32W				
	850mA	0.24A	39W	21-34W				
	900mA	0.25A	41W	22.5-36W	0.95	89%		
	950mA	0.26A	43.5W	24-38W				
	1000mA	0.27A	45.5W	25-40W				
	1050mA	0.28A	47.5W	26-42W				

* Test result @230V, 50Hz, Full Load.

1. Parameters

Category	Item	Technical Norm
Features	Output Type	Constant Current
	IP Grade	IP20
	Insulation Class	Class II
Input	Rated Input Voltage	220-240VAC
	Range of Input Voltage	198-264VAC
	Range of DC Input Voltage CC21W150-500CG2	220-280VDC
	Range of DC Input Voltage CC30W350-700CG2 CC42W700-1050CG2	220-280VDC
	Frequency	50/60Hz
	Input Current	≤0.28A
	Input Power	≤47.5W
	Power Factor	≥0.92 (230VAC, full load)
	THD	@21W ≤20%(230VAC, full load) @30W/42W ≤15% (230VAC, full load)
	No-load Power Consumption	≤0.5W @230VAC
	Output	Current Accuracy
Max. Output Power		42W
Started Delay Time		≤0.5S (230VAC, full load)
Current Ripple(< 120 Hz)		±5% (Imax-Imin) / (Imax+Imin)
PstLM		≤1
SVM		≤0.4
Protection	Short Circuit Protection	Auto Recovery
	Overload Protection	Auto Recovery
	No-load Protection	Auto Recovery
	Insulation voltage	I/P to O/P , 3KVac/1min
	Insulation resistance	>100M ohm @ 500VDC
	Leakage current	I/P to O/P < 250 μ A
Environment	Ta/Operation Temperature	21W,30W: -20...+50℃; 42W: -20...+45℃
	Ts/Storage Temperature	-40....+85℃
	Tc/Enclosure Temperature	85 ℃
	Humidity	10%....90%RH
	Atmosphere	86-108KPa
Construction	Connection Method	Push-in Terminal
	Installation	Build-in & Independent
	PRI Wire preparation	0.75-1.5 [□]
	SEC Wire preparation	0.5-1.5 [□]
	Dimension	Independent:137.6*44*25.5mm (L*W*H) Built in:97.8*44*25.5mm(L*W*H)

Standards	Certification	CE
	Safety Standards	EN61347-1:2015,EN61347-2-13:2014/A1:2017,E N62493:2015,AS 61347.2.13:2018, AS/NZS 61347.1:2016 Inc A1
	EMC Standards	EN55015:2019/A11:2019,EN61000-3-2:2019,EN61000-3-3:2013/A1:2019,EN61547:2009
	Performance	EN62384
	Surge	L-N/2KV
Others	RoHS	Complied to 2011/65/EU
	Life Time	50000h @Ta / Tc
	Warranty	5years , F.R. <10000ppm
	Noise	≤ 24dB @Background noise ≤18dB , Interval≥15cm
Remark: 1.All Parameters, if not specified, are measured at 230VAC/50Hz and 25℃ ambient temperature. 2.LED Driver is a component of the luminaires. Luminaires and wire layout will affect the EMC, please check theEMC with end products again.		

2. Connected quantities of different current Breaker

CC21W150-500CG2 CC21W150-500CG2-1

TYPE	Connected quantities of different current Breaker						Input Voltage	Inrush Current	Time
	current (A)	10	13	16	20	25			
	Installation wire diameter	1.5mm ²	2.5mm ²	2.5mm ²	4mm ²	4mm ²			
TYPE B	40	52	64	80	100	@230VAC	15	400	
TYPE C	64	83	102	128	160				
TYPE D	102	133	164	205	256				

CC30W350-700CG2 CC30W350-700CG2-1

TYPE	Connected quantities of different current Breaker						Input Voltage	Inrush Current	Time
	current (A)	10	13	16	20	25			
	Installation wire diameter	1.5mm ²	2.5mm ²	2.5mm ²	4mm ²	4mm ²			
TYPE B	30	39	48	60	75	@230VAC	20	400	
TYPE C	48	62	77	96	120				
TYPE D	77	100	123	154	192				

CC42W700-1050CG2 CC42W700-1050CG2-1

TYPE	Connected quantities of different current Breaker						Input Voltage	Inrush Current	Time
	current (A)	10	13	16	20	25			
	Installation wire diameter	1.5mm ²	2.5mm ²	2.5mm ²	4mm ²	4mm ²			
TYPE B	24	31	38	48	60	@230VAC	25	400	
TYPE C	38	50	61	77	96				
TYPE D	61	80	98	123	154				

3. Label

UK CA KGP LED POWER SUPPLY LED I ■
 KGP Electronics GmbH Hueckstraße 19 DE-58511 Lüdenscheid Model:CC21W150-500CG2-1 LED + ■
 EAC Constant Current Type For LED modules only 8mm
 UN=220-240VAC 50/60Hz ta=-20°C - +50°C tc=80°C PRI 0.75-1.5 □ SEC 0.5-1.5 □
 Uout:20-42VDC SEC:150-500mA Uout=Max.55VDC

Prated(W)	Irated(mA)	λ	1	2	3	Prated(W)	Irated(mA)	λ	1	2	3
6.3	150	0.70C	-	-	-	14.7	350	0.90C	-	-	ON
8.4	200	0.80C	ON	-	-	16.8	400	-	ON	-	ON
10.5	250	-	ON	ON	-	18.9	450	-	ON	ON	ON
12.6	300	0.85C	ON	ON	-	21	500	0.92C	ON	ON	ON

UK CA EAC SELV

UK CA KGP LED POWER SUPPLY LED + ■
 KGP Electronics GmbH Hueckstraße 19 DE-58511 Lüdenscheid Model:CC30W350-700CG2-1 LED I ■
 EAC Constant Current Type For LED modules only 8mm
 UN=220-240VAC 50/60Hz ta=-20°C - +50°C tc=80°C PRI 0.75-1.5 □ SEC 0.5-1.5 □
 Uout:25-42VDC SEC:350-700mA Uout=Max.55VDC

Prated(W)	Irated(mA)	λ	1	2	3	Prated(W)	Irated(mA)	λ	1	2	3
14.7	350	-	-	-	-	23.1	550	0.90C	-	-	ON
16.8	400	0.85C	ON	-	-	25.2	600	0.92C	ON	-	ON
18.9	450	-	ON	ON	-	27.3	650	-	ON	ON	ON
21	500	0.90C	ON	ON	-	29.4	700	0.95	ON	ON	ON

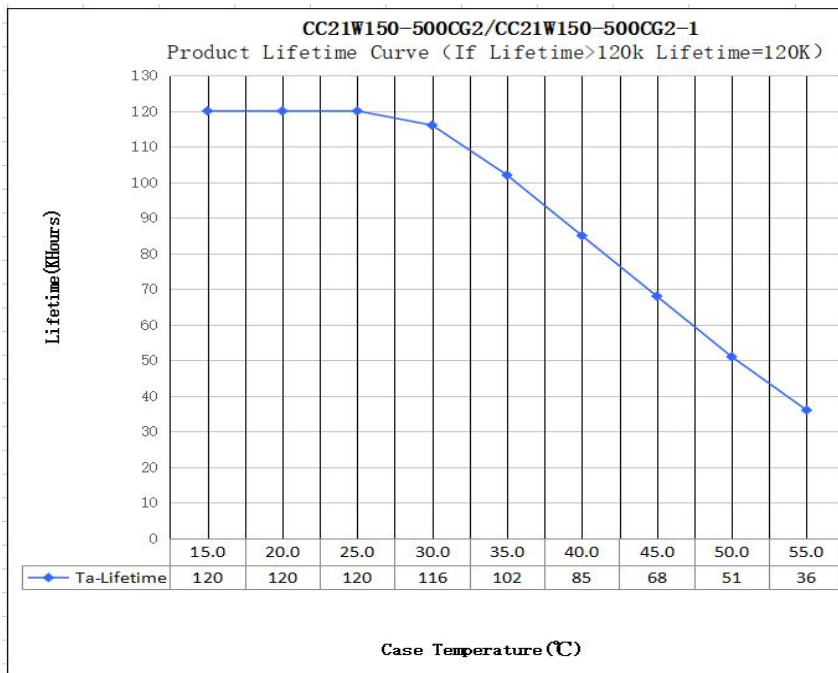
UK CA EAC SELV

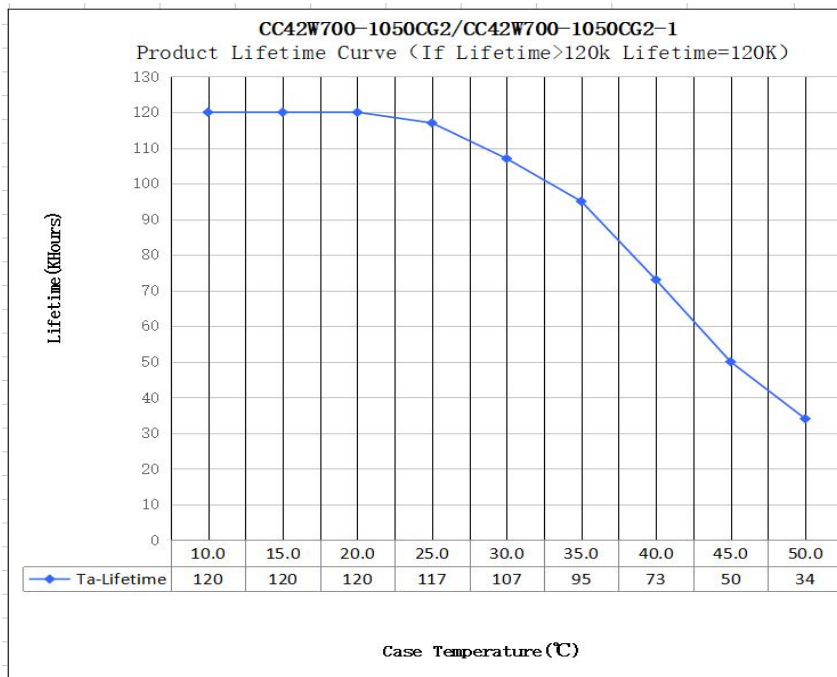
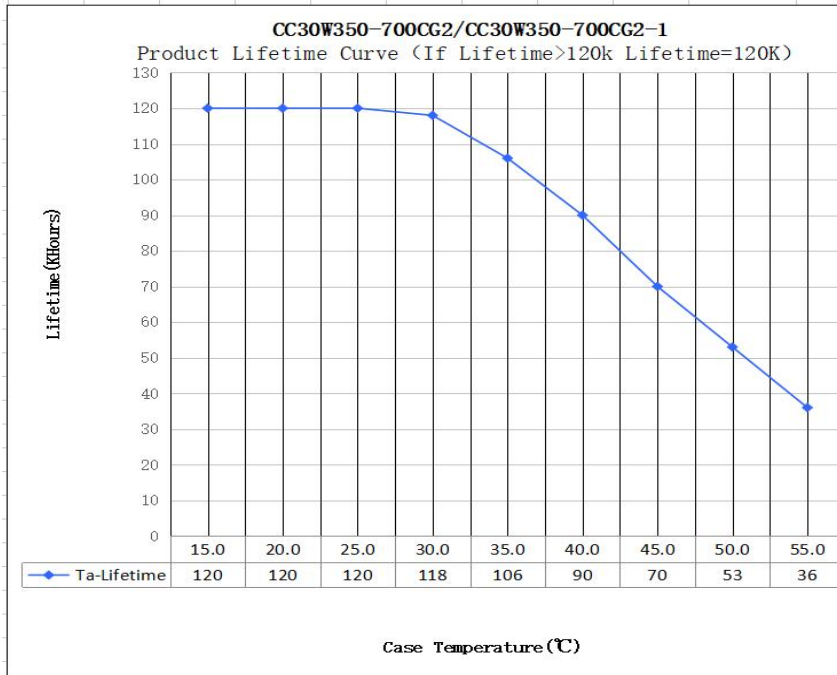
UK CA KGP LED POWER SUPPLY LED + ■
 KGP Electronics GmbH Hueckstraße 19 DE-58511 Lüdenscheid Model:CC42W700-1050CG2-1 LED I ■
 EAC Constant Current Type For LED modules only 8mm
 UN=220-240VAC tc=85°C PRI 0.75-1.5 □ SEC 0.5-1.5 □
 Uout:25-40VDC SEC:700-1050mA Uout=Max.55VDC

Prated(W)	Irated(mA)	λ	ta(tc)	1	2	3	Prated(W)	Irated(mA)	λ	1	2	3	ta(tc)
28	700	-	-	-	-	-	36	900	-	-	-	-	ON
30	750	-	-	-	-	-	38	950	-	ON	-	ON	-20...+50
32	800	0.92C	-20...+50	ON	-	-	40	1000	0.95	ON	ON	ON	-20...+50
34	850	-	-	ON	ON	-	42	1050	-	ON	ON	ON	-20...+50

UK CA EAC SELV

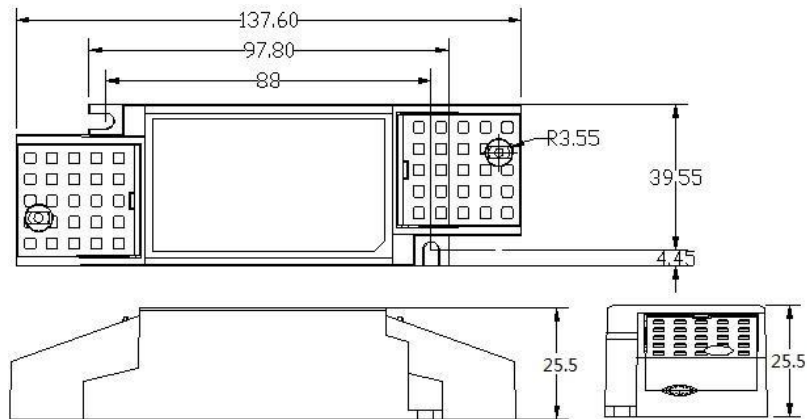
4. Lifetime curve



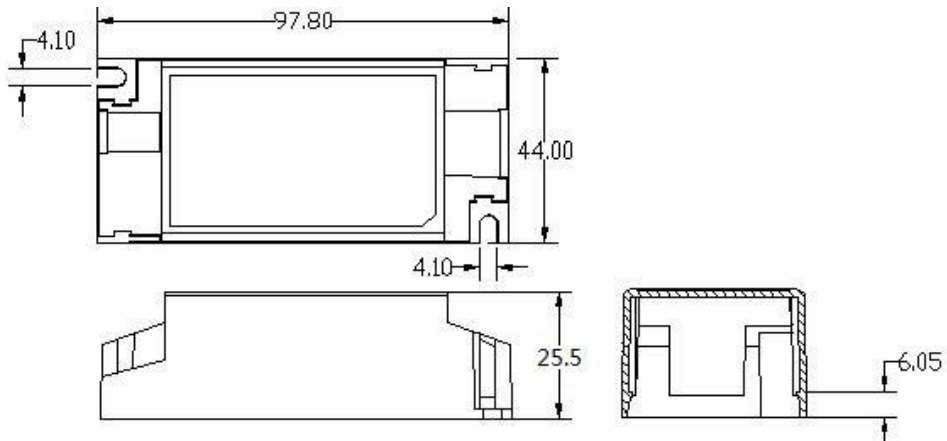


5. Dimension (Unit: mm)

Independent type:

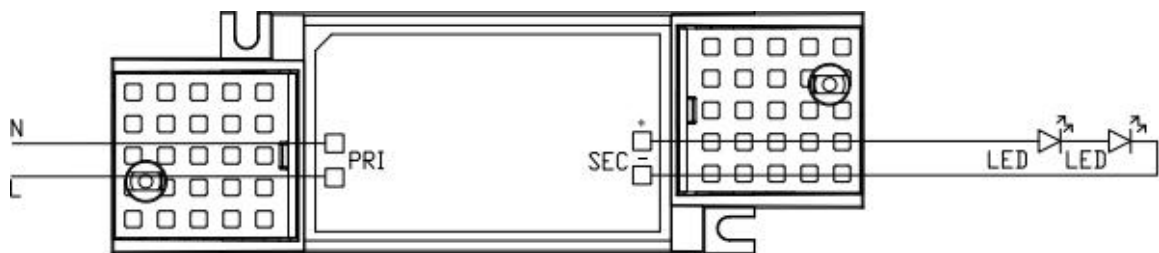


Built in type:

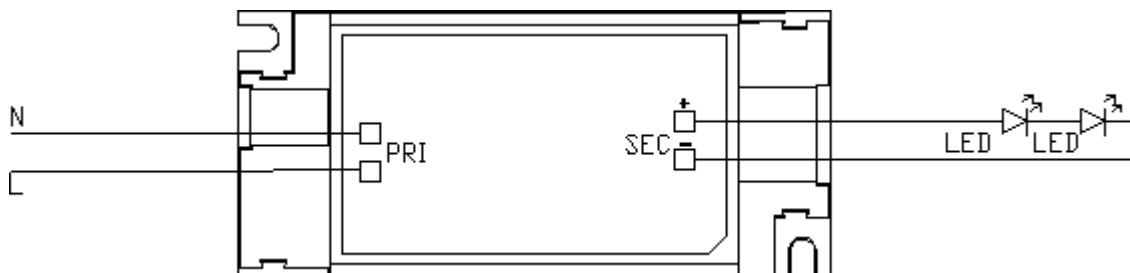


6. Wiring Diagram

Independent type:



Built in type:



7. Packing infor

Carton L*W*H(mm)	Pcs/Carton	Net weight/ Pcs(kg)	Net weight/ Carton(kg)	Gross weight /Carton(kg)
450*240*200	85	0.124	10.54	11.29

8. Wiring instructions

- All connections must be kept as short as possible to ensure good EMI behaviour
- Mains leads should be kept apart from LED Driver and other leads (ideally 5 – 10 cm distance)
- Advice the maximum length of output wires is 3 m
- Secondary switching is not permitted (Except for constant voltage)
- Incorrect wiring can damage LED modules.
- The wiring must be protected against short circuits to earth (sharp edged metals parts, metal cable clips, louver, etc.)

9. REVISION HISTORY

DATE	VER	REMARK
2022-09-23	V1.0	Initial release.