

Specification

Model : RNPW60TA-B

Description:

5000*6, 300pcs 2835 SMD LEDs, equipped with silicone casing, constant voltage 12Vdc, LED flexible strip (3D)

Prepared by : _____

Checked by : _____

Standard Dept : _____

Approved by : _____

Issued Status: Draft Published

Specification

Product Name: LED flexible strip

Model: RNPW60TA-B

Applications

Suitable for indoor use, such as in KTV, shopping mall, cabinet etc. as cove and contour lighting. Bending radius $\geq 5\text{cm}$, not suitable for channel letter application.

Features



1. 2835 SMD LEDs mounted;
2. Can be cut at the printed marks;
3. Adopt silicone casing technology: LED optical properties of high fidelity, anti-UV, salt-fog proof, resistant to cold and heat shock, excellent temperature stability, etc;
4. CE, RoHS compliant.

Installation

Easy installation with self-adhesive back.



Warranty

3 years or 13000 hours, whichever comes first;

RISHANG

Optical and Electrical Parameters:

P/N	LED Color	Color Temperature (K)	Color Tolerance Adjustment (SDCM)	Beam Angle (°)	Luminous Flux (lm/m)	CRI	Luminous Efficacy (lm/W)	Working Voltage (V DC)	Working Current (mA)		Power (W)	
									1m [39.37in]	5m [196.85in]	1m [39.37in]	5m [196.85in]
RNPW60TA-B	Neutral White	4000-4500	-	115	500	≥ 75	75	12	1000	1580	6.6	19

Others:

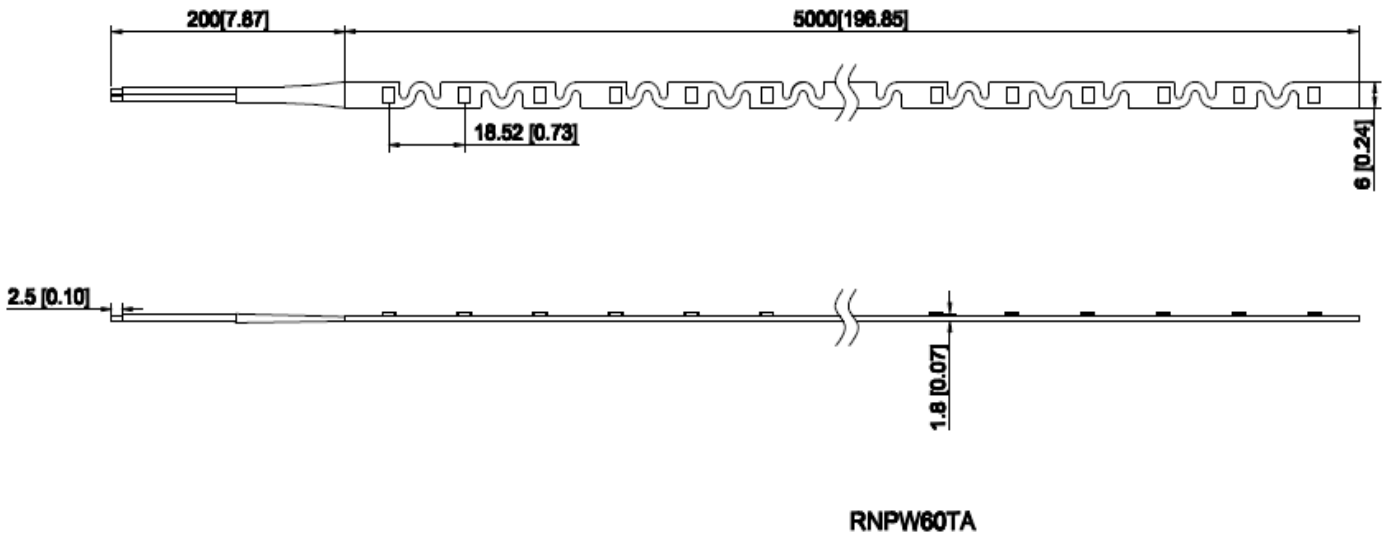
P/N	LED Color	Standard Length		Max. cascading Length		LED Qty (pcs/ m)	Operating Temperature		Storage Temperature		IP Grade
		(m)	(in)	(m)	(in)		(°C)	(°F)	(°C)	(°F)	
RNPW60TA-B	Pure White	5	196.85	5	196.85	60	-25~+60	-13~+140	-25~+70	-13~+158	IP65

Notes:

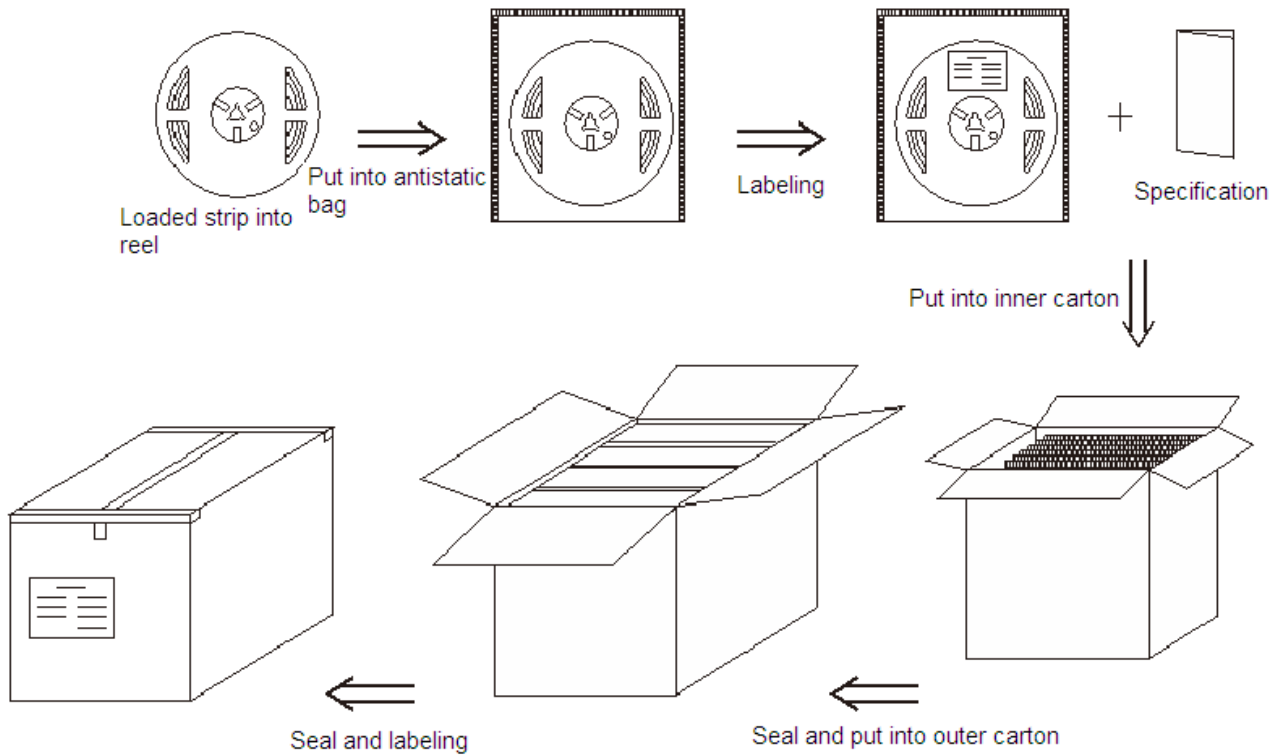
- ① Testing environment temperature: 25±2°C [77±3.6°F];
- ② The actual data of each single product may differ from above typical data which are subject to change without prior notice;
- ③ Above CCT is derived from bare LED, which might be changed slightly due to refraction of silicone casing, thus for final CCT please refer to actual samples;
- ④ “-” in the above is SDCM parameters which are not required temporarily.

Profile Drawings:

Unit: mm [in]



Packaging Diagrams:



Packaging Information:

1. Rolling this product into plastic reel and put into antistatic bag and then packaged into double-deck corrugated carton;
2. Outer carton: 39*25*22.6cm =0.0220 (1±10%) CBM [15.35*9.84*8.89in]; inner carton: 23*18.6*19.6cm =0.0083 (1±10%) CBM [9.05*7.32*7.71in];
3. 5m [196.85in] per reel, 2pcs reels per antistatic bag, 12pcs antistatic bags per inner carton, 2pcs inner cartons per outer carton, 48pcs reels in total (5mX48=240m); 1pcs specification per inner carton;
4. Net Weight (N.W) : 2.55 (1±10%) kg [5.62 (1±10%) lb];
5. Gross Weight (G.W) : 4.37 (1±10%) kg [9.63 (1±10%) lb];
6. The actual packed quantity and weight may subject to change without prior notice.